

PERCORSO PRESENTATO DA MICHELANGELO FRISONI, LEAD AND SENIOR COMPOSITOR PRESSO DOUBLE NEGATIVE

# INTRO AL COMPOSITING

## - EFFETTI VISIVI DIGITALI -

*“Iniziativa realizzata nell’ambito del Piano Nazionale Cinema e Immagini per la Scuola promosso da MiC e MiM”;* (<https://cinemaperlascuola.istruzione.it/>).



MICHELANGELO FRISONI

FROM THE PRODUCER OF *THE FAST AND THE FURIOUS*



A WHOLE NEW SPEED OF HERO

**SONIC**  
**THE HEDGEHOG**

11.08.19

ONE SUMMER CAN CHANGE EVERYTHING.



NETFLIX

**STRANGER  
THINGS**



**GOD  
VS  
KING**

2020

LEGENDARY

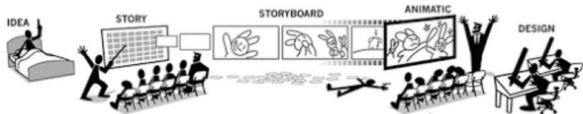
GOZILLAVS.KONG.COM



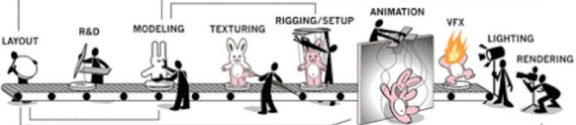
A Q U A M A N

LEAD COMPOSITOR / SENIOR COMPOSITING ARTIST

## PRE-PRODUCTION



## PRODUCTION



## POST-PRODUCTION

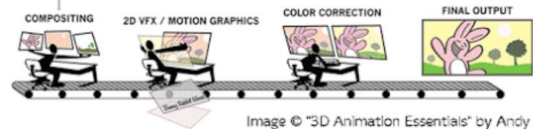
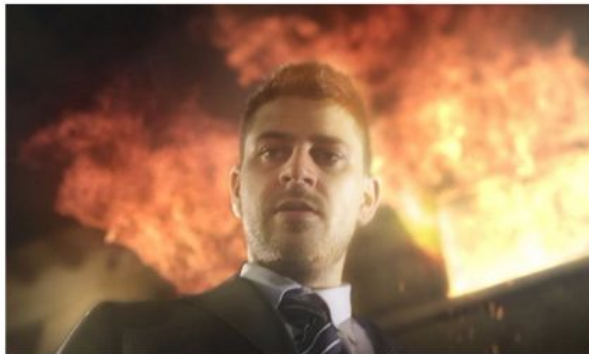


Image © "3D Animation Essentials" by Andy Beane.

## COMPOSITING

LIVE ACTION  
COMPOSITING  
STOCK FOOTAGE



2D VFX



IL REALISMO DELLA CGI SI FA IN COMPOSITING



BLADE RUNNER

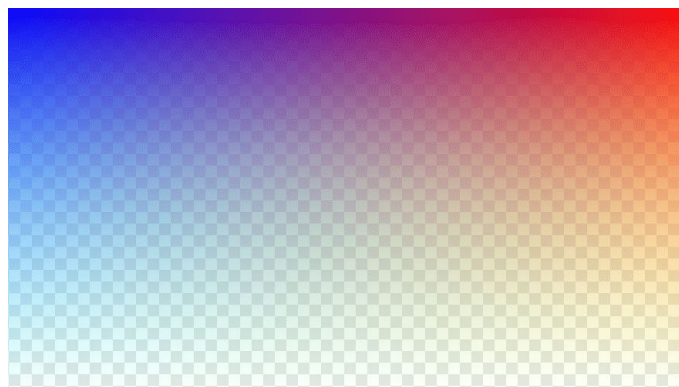
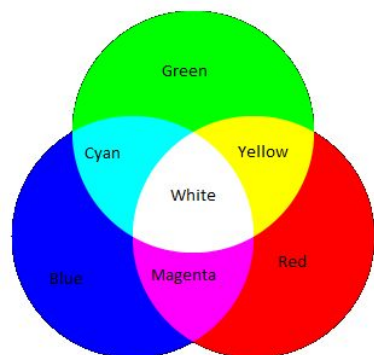
COMP REEL

VFX CORE FUNDAMENTALS

# RGBA LAYERING AND BIT DEPTH



# RGBA



Greenscreen footage is placed on a layer above the background

All green is removed from the greenscreen footage

The background is visible in all parts of the image that were originally green

8-bit

1-bit

Ⓢ

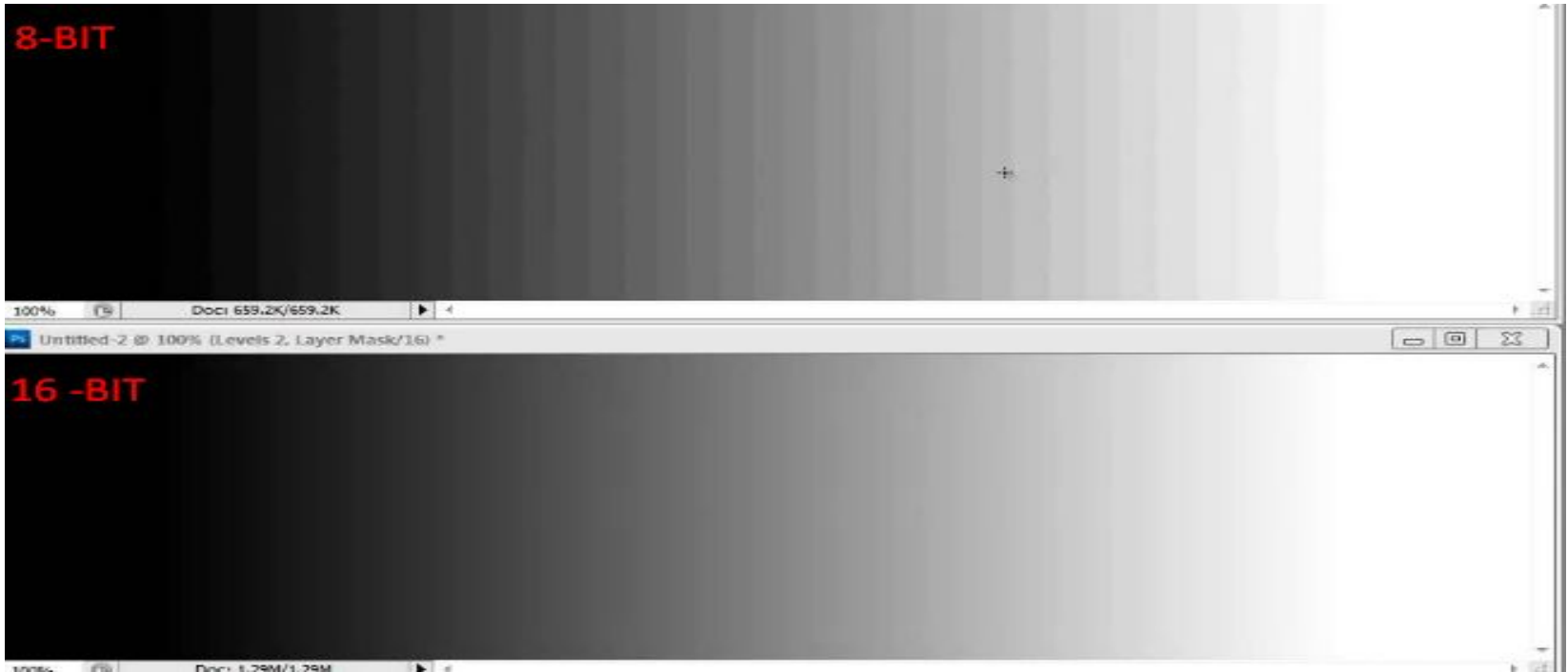


# 16-bit color

## Working with high fidelity color

Color banding can emerge in gradients when editing an 8-bit per channel image because each channel contains only 256 value steps.

16-bit color avoids these problems as each channel contains 65,536 value steps.



8 Bit



16 Bit





## motion graphics

SAPER FARE  
ANIMAZIONE 2D-2.5D  
DI BASE

## compositing

2D VFX  
EFFETTI PARTICELLARI  
CLEAN PLATES  
PHOTOSHOP

## matchmoving

- **INTEGRATED IN AFTER EFFECT**  
3D CAMERA TRACKER  
THE FOUNDRY CAMERA TRACKER
- **STANDALONE**  
SYNTHEYES  
PFTRACK  
BOUJOU  
AUTODESK MATCHMOVER

## CLEAN PLATE



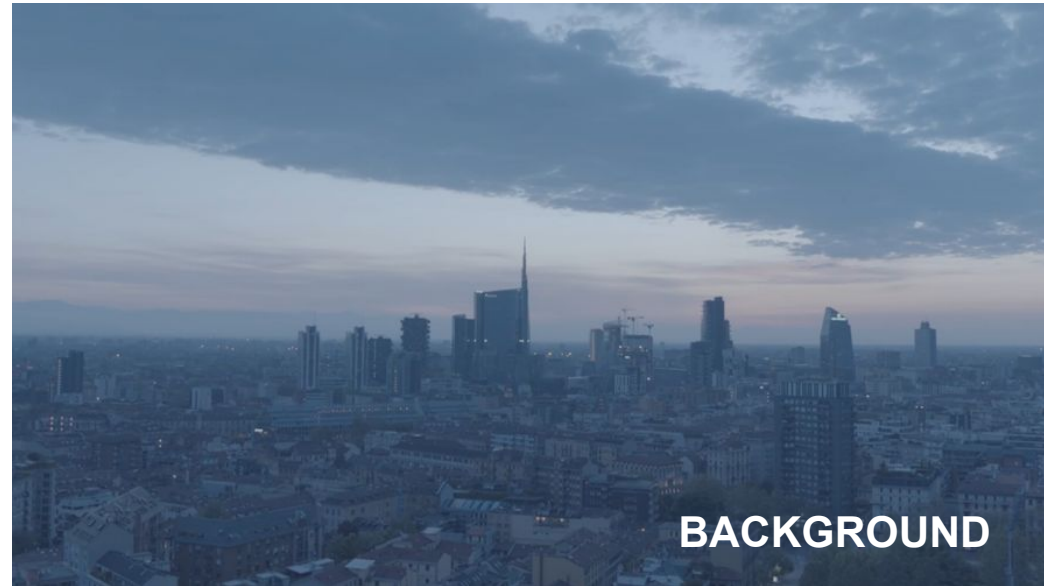
tecnica che ci permette di rimuovere elementi indesiderati della scena, ricreando con strumenti come il timbro clone e simili, lo sfondo o il contenuto dietro all'elemento rimosso



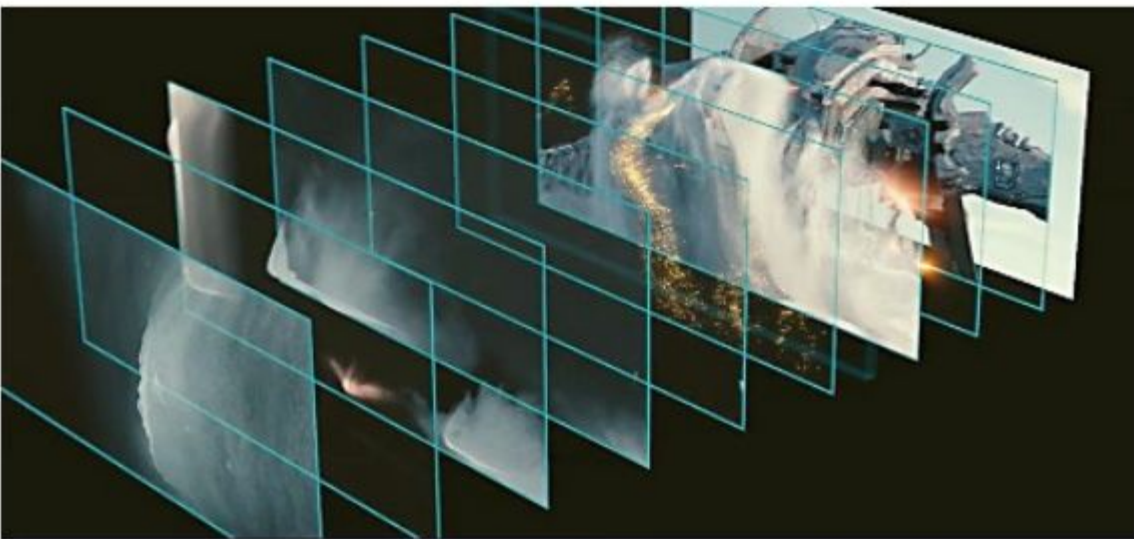
JAMES CAMERON WORKING ON GLASS SHOT FOR "ESCAPE TO NEW YORK" (1981)



# GREEN SCREEN



COMP: BLENDING MODE, ALPHA



A



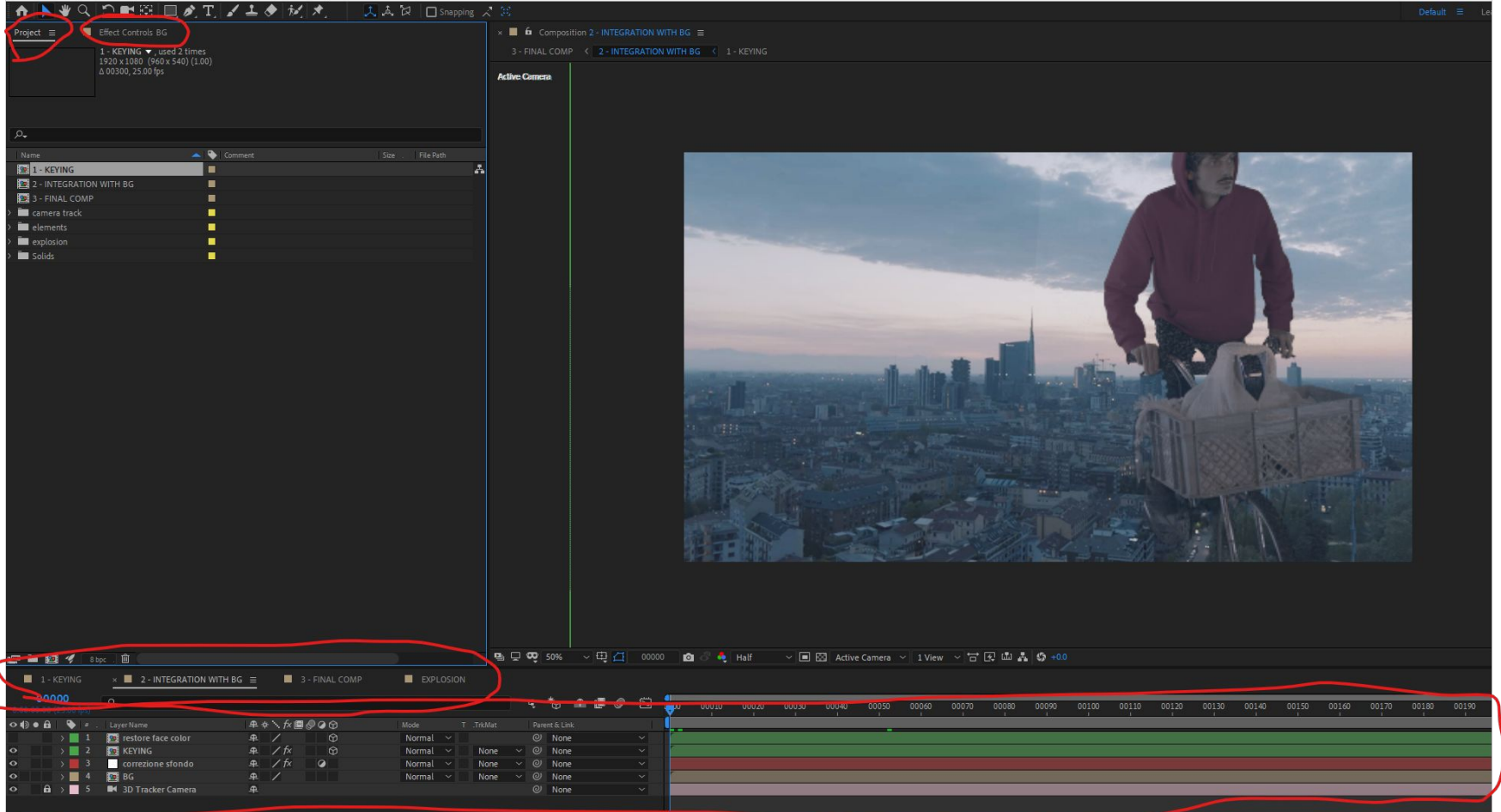
B



C



# INTERFACCIA AFTER EFFECTS





**al lavoro!**

MICHELANGELOFRISONI.COM

MICHELANGELOFRISONI@GMAIL.COM